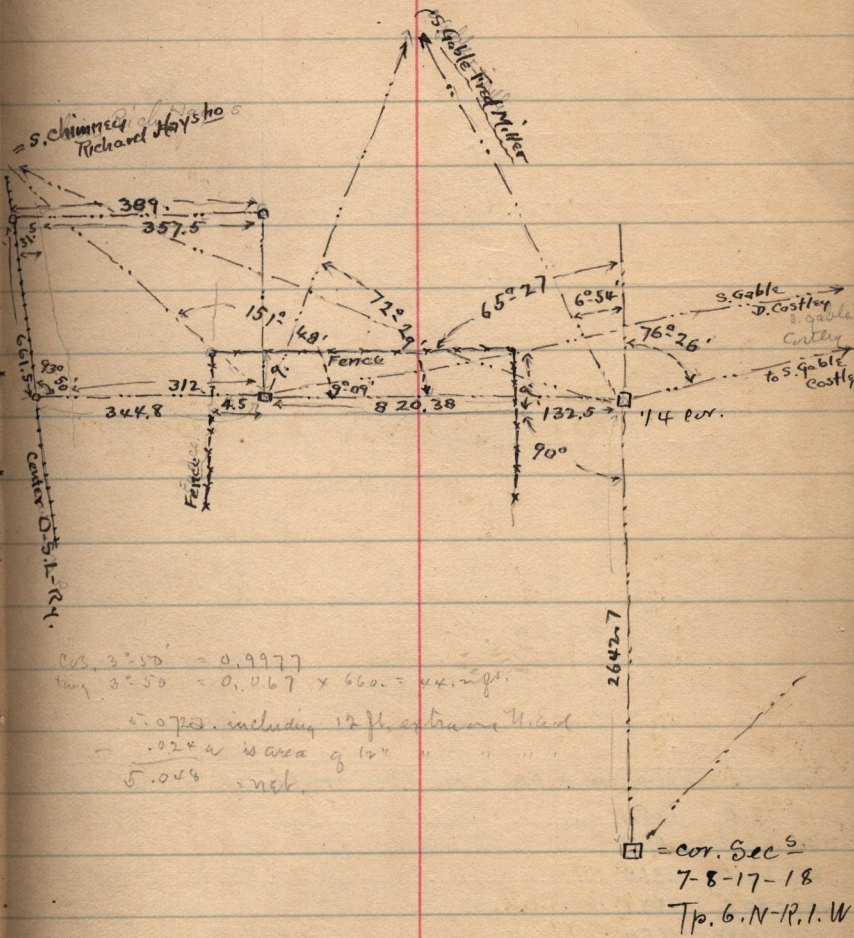


WASHINGTON JENKINS CIV. ENG.

March-21-1899-

820.38

Pt. NE 1/4 Sec. 7 - T. 6 N - R. 1. W. Brg. 12. ⁴³
 ch. N. & S. E. cor. 3d 1/4 - W 5.25 ch - N 10.
 ch. E. 5.25 ch. S 10. ch. to bry. 5.25 a.



cos 3°50' = 0.9977
 tan 3°50' = 0.067 x 660 = 44.2 ft.

5.072 including 12 ft. extra
 - .02 x 4 is area of 12"
 5.048 net.

= cor. Sec 5
 7-8-17-18
 Tp. 6. N - R. 1. W